

Frequently asked questions..



What happens on a visit?

You will arrive at the school office and they will bring you to your child's class. The New Entrant's class is called Kiwi. You are to play with your child in the class, and the teachers will talk you through information and later take you on a walk around the school environment.



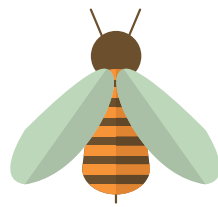
How many visits?

Your child will have 2-3 visits and must be accompanied by an adult. We can discuss at the visit how your child will settle and if you feel that they will need more time to settle in. We will also discuss how their first day of school will look and when this is. Children normally start the day after they turn 5.



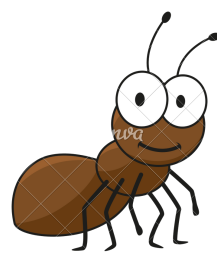
What will the school visit look like?

The visits are from 9.15- 11.00am. Your child will play in the class, and outside near our discovery shed, sandpit and tree gully. There will be a small mat time where they will have a story read to them. At this time a teacher can talk you through the information that you need to know. There will also be a walk around the school. We like the visits to be relaxed and it is an opportunity for your child to get a small taste of school life and routine. At the end of the visit it will be morning tea time and your child will be able to sit with the rest of the school. After morning tea the visit is finished.



Stationery?

This can be brought online via the school website. You will need to purchase an additional book bag. There is no need to buy a pencil case as all pens, pencils and glue is shared communally in the class. It is up to you if you wish to cover your child's books. A school hat can be purchased through the office. There is a school Kindo system for payments. Again this is on the school website. School newsletters can also be accessed on the school website for additional information. There is also a school facebook page which tells parents information about up and coming school events.



Homework?

We teach through play and also through formal learning once your child shows signs that they are ready and that they have settled into school life. We do not give out homework but do encourage you to read with your child. Later they will receive a reading book and poems to learn. We encourage parents/Whanau to have conversations, read and play games with their children.

